



Maryland Monthly UST System Walkthrough Inspection

Site Name Your site	Facility ID 1234		
Address 123 Main St	City Baltimore	State MD	Zip 21208

SPILL PREVENTION EQUIPMENT

Tank ID # Tank #1	Product Regular UNL
Fill cover lid present, not broken or damaged PASS	No cracks, bulges, or holes in the Spill Bucket PASS
Fill pipe properly identified to indicate tank capacity and product stored PASS	Fill cap in good condition, seals tightly PASS
Spill bucket free from trash, debris, water, and product PASS	

Comments

Tank ID # Tank #2	Product Supreme UNL
Fill cover lid present, not broken or damaged PASS	No cracks, bulges, or holes in the Spill Bucket PASS
Fill pipe properly identified to indicate tank capacity and product stored PASS	Fill cap in good condition, seals tightly PASS
Spill bucket free from trash, debris, water, and product PASS	

Comments

Tank ID # Tank #3	Product ULS Diesel
Fill cover lid present, not broken or damaged PASS	No cracks, bulges, or holes in the Spill Bucket PASS
Fill pipe properly identified to indicate tank capacity and product stored PASS	Fill cap in good condition, seals tightly PASS
Spill bucket free from trash, debris, water, and product PASS	

Comments



TANK RELEASE DETECTION - ATG & ELECTRONIC INTERSTITIAL MONITORING

Automatic Tank Gauge (ATG)

Tank ID # Tank #1	The power is on PASS
There are no warning or alarms PASS	The printer has paper and previous month's passing tank leak test printed and filed. PASS

Electronic Interstitial Monitoring (IM)

The power is on PASS	There are no warning or alarms PASS
	Sensor Status Report: Printed and filed PASS

Comments

Automatic Tank Gauge (ATG)

Tank ID # Tank #2	The power is on PASS
There are no warning or alarms PASS	The printer has paper and previous month's passing tank leak test printed and filed. PASS

Electronic Interstitial Monitoring (IM)

The power is on PASS	There are no warning or alarms PASS
	Sensor Status Report: Printed and filed PASS

Comments

Automatic Tank Gauge (ATG)

Tank ID # Tank #3	The power is on PASS
There are no warning or alarms PASS	The printer has paper and previous month's passing tank leak test printed and filed. PASS

Electronic Interstitial Monitoring (IM)

The power is on PASS	There are no warning or alarms PASS
	Sensor Status Report: Printed and filed PASS

Comments



PIPING RELEASE DETECTION - ELLD & ELECTRONIC INTERSTITIAL MONITORING

Tank ID
Tank #1
Passing 0.2 gph leak test from previous month reviewed and filed
PASS

Passing 3.0 gph leak test performed within past 48-hours.
PASS
ELLD tested and passed within past year
PASS

Electronic Interstitial Monitoring (IM)

The Power is on
PASS

There are no warnings or alarms
PASS

Sensor status report printed and filed
PASS

Tank ID
Tank #1
Passing 0.2 gph leak test from previous month reviewed and filed
PASS

Passing 3.0 gph leak test performed within past 48-hours.
PASS
ELLD tested and passed within past year
PASS

Electronic Interstitial Monitoring (IM)

The Power is on
PASS

There are no warnings or alarms
PASS

Sensor status report printed and filed
PASS

Tank ID
Tank #1
Passing 0.2 gph leak test from previous month reviewed and filed
PASS

Passing 3.0 gph leak test performed within past 48-hours.
PASS

Electronic Interstitial Monitoring (IM)

The Power is on
PASS

There are no warnings or alarms
PASS

Sensor status report printed and filed
PASS

INVENTORY RECORDS

Records completed daily and reconciled monthly
PASS

Records do not show (7) consecutive days of shortage totaling 80 or more for the previous 30 days
PASS

Prior month reconciliation leak check is passing
PASS

**I HEREBY DECLARE THESE
STATEMENTS CORRECT**

Certification Numbers

Person Performing Walkthrough Inspection

Frank Webb



- API Worksafe Safety Key:
WS-c65e3605
- Veeder-Root: B35580

Additional Comments or Recommendations

I certify that I have personally examined the walkthrough inspection as established in COMAR 26.10.04 described below for this facility and I further certify that the information in this document is true, accurate, and complete.

PHOTOS



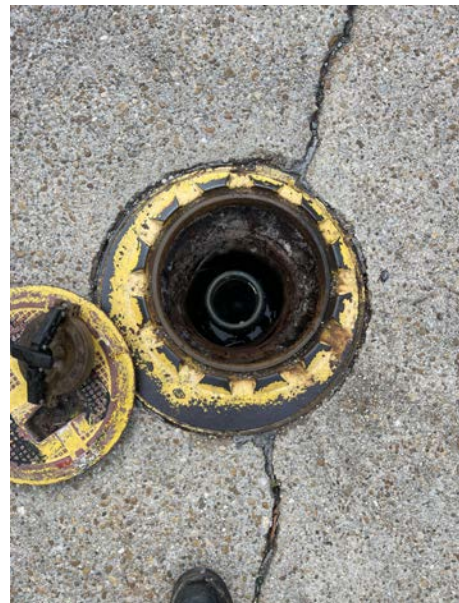
Diesel



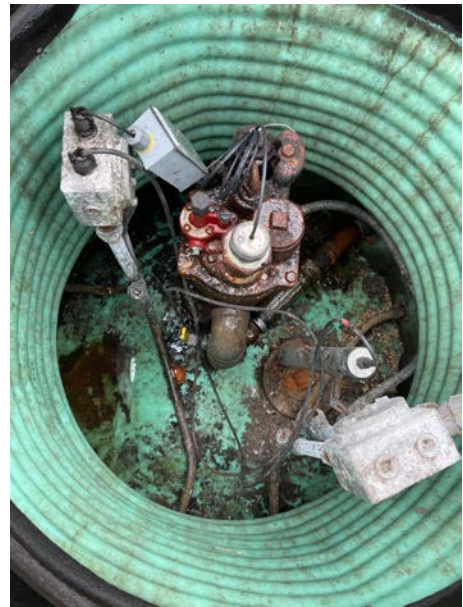
Diesel



Diesel(straight tube)



Diesel



Supreme



Supreme



Supreme (coaxial flapper tube)



Regular (master tank)



Regular (master)



Vents



1/2 UDC and piping



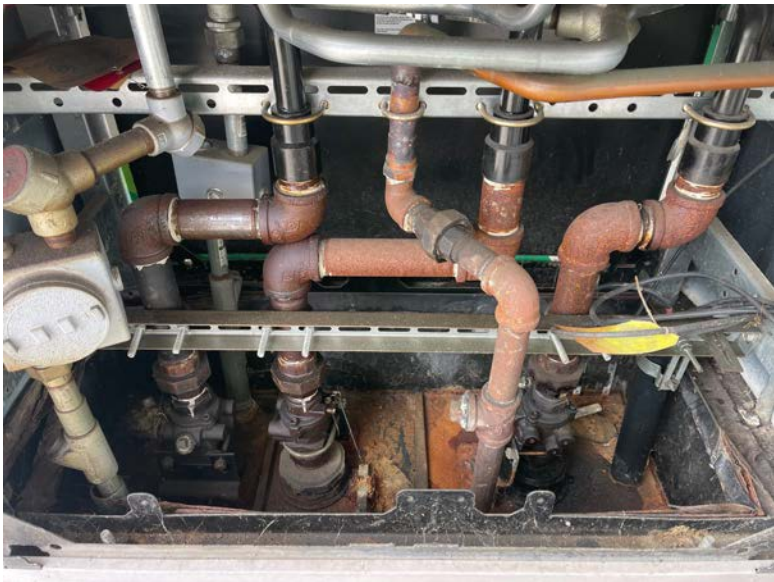
1/2



3/4 UDC and piping



3/4



5/6 UDC and piping



5/6



7/8 UDC and piping